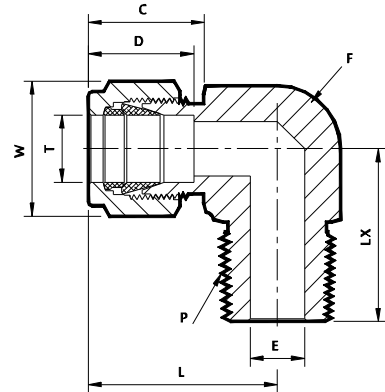


## 2.2 Male Elbow

### 02. Metric Tube x NPT (M)

Material - **SS 304 | SS 316**



Sr. No.	TUBE OD Ø T	NPT Male Pipe Size P	Ref. Part No.		ØE	D	C	L	LX	Body Hex F	Nut Hex W
			SS 304	SS 316							
	(mm)	(Inch)	MMED4	MMED6	Dimensions in Millimetres						
1	6 x 1/8		6MMED2Nx4	6MMED2Nx6	4.8	15.3	17.7	27.0	18.8	15	14.2
2	6 x 1/4		6MMED4Nx4	6MMED4Nx6	4.8			27.0	23.4	15	
3	6 x 3/8		6MMED6Nx4	6MMED6Nx6	4.8			29.8	26.2	17.5	
4	6 x 1/2		6MMED8Nx4	6MMED8Nx6	4.8			31.8	33.0	22.5	
5	8 x 1/8		8MMED2Nx4	8MMED2Nx6	4.8	16.2	18.6	28.8	19.8	15	16
6	8 x 1/4		8MMED4Nx4	8MMED4Nx6	6.4			28.8	24.4	15	
7	8 x 3/8		8MMED6Nx4	8MMED6Nx6	6.4			30.6	26.2	17.5	
8	8 x 1/2		8MMED8Nx4	8MMED8Nx6	6.4			32.6	33.0	22.5	
9	10 x 1/8		10MMED2Nx4	10MMED2Nx6	4.8	17.2	19.5	31.5	21.6	20.5	19
10	10 x 1/4		10MMED4Nx4	10MMED4Nx6	7.1			31.5	26.2	20.5	
11	10 x 3/8		10MMED6Nx4	10MMED6Nx6	7.9			31.5	26.2	20.5	
12	10 x 1/2		10MMED8Nx4	10MMED8Nx6	7.9			33.5	33.0	22.5	
13	12 x 1/4		12MMED4Nx4	12MMED4Nx6	7.1	22.8	22.2	36.0	28.2	20.5	22.2
14	12 x 3/8		12MMED6Nx4	12MMED6Nx6	9.5			36.0	28.2	20.5	
15	12 x 1/2		12MMED8Nx4	12MMED8Nx6	9.5			36.0	33.0	22.5	
16	12 x 3/4		12MMED12Nx4	12MMED12Nx6	9.5			39.8	36.8	27.5	
17	15 x 1/2		15MMED8Nx4	15MMED8Nx6	11.9	24.4	22.0	38.0	35.1	27.5	25.4
18	16 x 3/8		16MMED6Nx4	16MMED6Nx6	9.5	24.4	22.0	38.0	30.2	27.5	25.4
19	16 x 1/2		16MMED8Nx4	16MMED8Nx6	11.9			38.0	35.1	27.5	
20	16 x 3/4		16MMED12Nx4	16MMED12Nx6	12.7			39.8	36.8	27.5	
21	18 x 1/2		18MMED8Nx4	18MMED8Nx6	11.9			39.8	36.8	27.5	
22	18 x 3/4		18MMED12Nx4	18MMED12Nx6	15.1	26.0	22.0	39.8	36.8	27.5	30
23	20 x 1/2		20MMED8Nx4	20MMED8Nx6	11.9			44.6	41.7	32	
24	20 x 3/4		20MMED12Nx4	20MMED12Nx6	5.9			44.6	41.7	32	
25	22 x 3/4		22MMED12Nx4	22MMED12Nx6	15.9			44.6	41.7	32	
26	25 x 3/4		25MMED12Nx4	25MMED12Nx6	15.9	31.3	26.5	49.1	41.7	36	38
27	25 x 1		25MMED16Nx4	25MMED16Nx6	21.8			49.1	46.5	36	

- NOTE :
- ① The E Dimension is the minimum opening & Fittings of this group may be back drilling to lager ID at pipe thread or straight thread end
  - ② Dimension LX, C, D is shown in the finger-tight position.
  - ③ NPT thread as per ANSI B 1.20.1.